

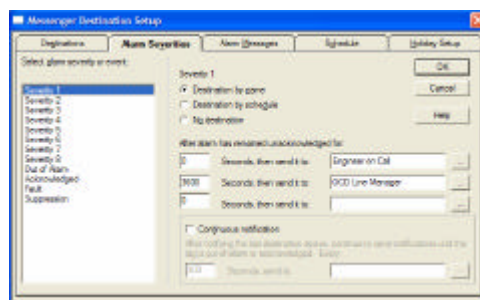
Peak42 delivers a Control System Messaging Solution in the Pharmaceutical Industry generating SMS Text Messages and E-mails direct from the site SCADA system.

Case study

“Modern technologies when applied by experts in a totally controlled and managed project environment allow us to respond perfectly to our clients needs. This project challenged our offering and made us evaluate / adopt new software components from Rockwell”

David Forshaw
Director
Peak42 Limited

Following consultation with our Pharmaceutical Client and Technology Partner, Peak42 was asked to deliver a Control System Messaging solution to be “bolted on” to a 21 CFR Compliant Installation. This new challenge was tackled using Rockwell Technologies deployed in the control system and corporate environment enabling Production messages to be sent to the relevant personnel. This on-site / off-site system keeps the production personnel up-to-date with the status of critical plant items via periodic / exception e-mails, SMS Alarm Text and PDA Alerts.



BUSINESS SITUATION

Post installation of a validated control system to their plant, which brought together the production and corporate environment, our Pharmaceutical client decided to extend the system further via on / off site messaging using a variety of media.

SOLUTION

As an add-on to the site Supervisory Control and Data Acquisition, a Messaging component is installed to provide:

- Regular Plant Status information.
- Alarm system with engineering personnel on-call schedule.
- Messaging escalation when alarms are not acknowledged.

BENEFITS

- Limited Validation Activities due to the technology and implementation method chosen.
- Improved response time.
- Preventive maintenance operations prior to problem occurring.
- Increased system availability



Solution

Using the existing Control System we minimised the cost and impact of validation by limiting the amount of changes to existing software and number of new components to be deployed.

The VLAN backbone previously used for the recording of 21 CFR Part 11 data to a Site Wide Historian installed on a corporate server is used to enable TCP/IP based communication for e-mails.

RSView32 Messenger is “bolted” onto the existing SCADA. It then gathers Tags & Alarm information and relays them to Outlook.

The Outlook client installed locally is used to connect automatically to the corporate e-mail and SMS system.

The project was rolled out to GAMP4 with the site element installed during a two day plant cleaning shutdown. Peak42 supported the IQ and OQ activities to allow our client to re-start the plant with no production loss time.

Software and Services

Microsoft® Windows® 2000 Professional

Rockwell VersaView Industrial PCs

- RSView32
- RSMessenger
- RSSql
- Outlook

VLAN Corporate Infrastructure

RSBizWare Solution deployed on corporate site server

SMS Solution (Confidential)



For More Information

For more information about Peak42

Tel: +44 (0) 870 766 9142

Fax: +44 (0) 870 766 9143

Web www.peak42.com

Email enquiry@peak42.com

RSView32, RSMessenger, RSBizWare, RSSql, the Windows Server System logo registered trademarks.

The names of Peak42 and products mentioned herein may be the trademarks of their respective owners.

